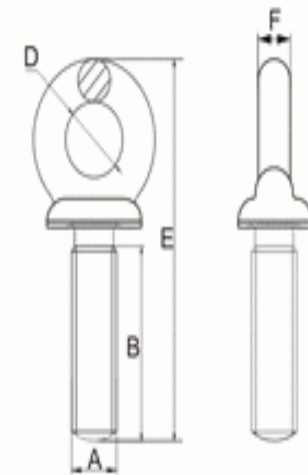




**U.S. TYPE SHOULDER TYPE MACHINERY EYE BOLT**



Item	Size	W.L.L.(lbs)	Dimensions (inch)					Weight kg
			A	B	D	E	F	
HK2701	1/4" X 1"	650	0.25	1	0.75	1.94	0.19	0.023
HK2702	5/16" X 1-1/8"	1,200	0.31	1.13	0.88	2.38	0.25	0.028
HK2703	3/8" X 1-1/4"	1,550	0.38	1.25	1	2.72	0.31	0.057
HK2704	1/2" X 1-1/2"	2,600	0.5	1.5	1.19	3.38	0.38	0.114
HK2705	5/8" X 1-3/4"	5,200	0.63	1.75	1.38	4.19	0.5	0.227
HK2706	3/4" X 2"	7,200	0.75	2	1.5	4.94	0.62	0.398
HK2707	7/8" X 2-1/4"	10,600	0.88	2.25	1.75	5.72	0.75	0.715
HK2708	1" X 2-1/2"	13,300	1	2.5	2	6.47	0.88	0.991
HK2709	1-1/4" X 3"	21,000	1.25	3	2.5	7.72	1	1.727
HK2710	1-1/2" X 3-1/2"	24,000	1.5	3.5	3	9.25	1.25	3.180



- \* Forged carbon steel
- \* Galvanized or self colored